

RBRC 11575

Strain name C57BL/6N-Gt(ROSA)26Sor<tm1(CAG-G-CaMP9a,-R-CaMP2)Hbto>

Primer	primer_name	primer_seq	length	Reference
1	ROSA26 B1F2	AGTCGCTCTGAGTTGTTATC	20	Cell Rep., Methods 2, 100168 (2022).
2	ROSA26 B2R1	GGATCTCAAGCAGGAGAGTA	20	Cell Rep., Methods 2, 100168 (2022).
3	GCaMP	AGAACCCACAGAAGCAGAGC	21	RIKEN BRC

Reaction Components

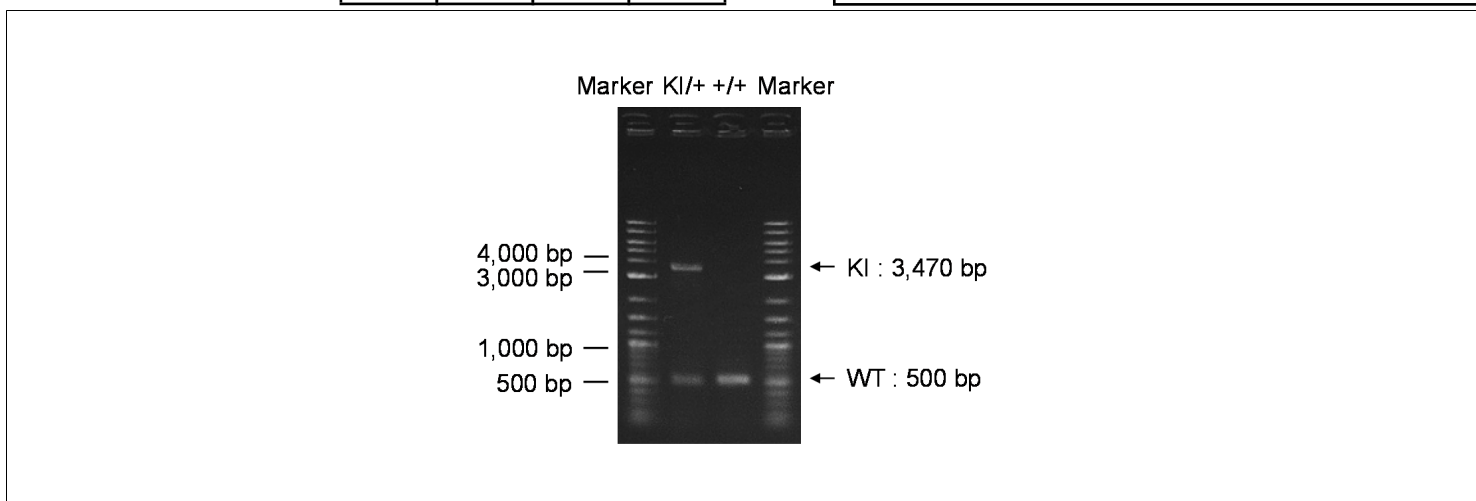
Enzyme TOYOBO KOD FX (Code.No : KFX-101)

Reagent	Conc	Reaction 1	2	3	4
H2O		1.8			
PCR buffer	2 X	10.0			
dNTP	2.0 mM	4.0			
primer 1	10 pmol/μl	1.0			
primer 2	10 pmol/μl	1.0			
primer 3	10 pmol/μl	1.0			
DNA		1.0			
Taq	1 U/μl	0.2			
total		20			

Reaction Conditions

step	temp (°C)	time (sec)	note
1	94	120	
2	98	10*	
3	63	30*	
4	68	300*	*Repeat for 30 cycles

Marker 2-Log DNA Ladder (NEB, Cat. N3200)
Gel 1% agarose in 1 X TAE (100 V, 30 min)



primer_set	product_size	product (allele type)
primer 1	500 bp	WT
primer 1	3,470 bp	KI

Comment [Standard PCR](#)

Novagen KOD Xtreme™ Hot Start DNA Polymerase can be purchased from EMD.

RBRC 11575

Strain name C57BL/6N-Gt(ROSA)26Sor<tm1(CAG-G-CaMP9a,-R-CaMP2)Hbto>

Primer	primer_name	primer_seq	length	Reference
1	ROSA26 B1F2	AGTCGCTCTGAGTTGTTATC	20	Cell Rep., Methods 2, 100168 (2022).
2	ROSA26 B2R1	GGATCTCAAGCAGGAGAGTA	20	Cell Rep., Methods 2, 100168 (2022).
3	CAGprom1114R	GATGGGGAGAGTGAAGCAGAACGT	24	Cell Rep., Methods 2, 100168 (2022).

Reaction Components

Enzyme TOYOBO KOD FX (Code.No : KFX-101)

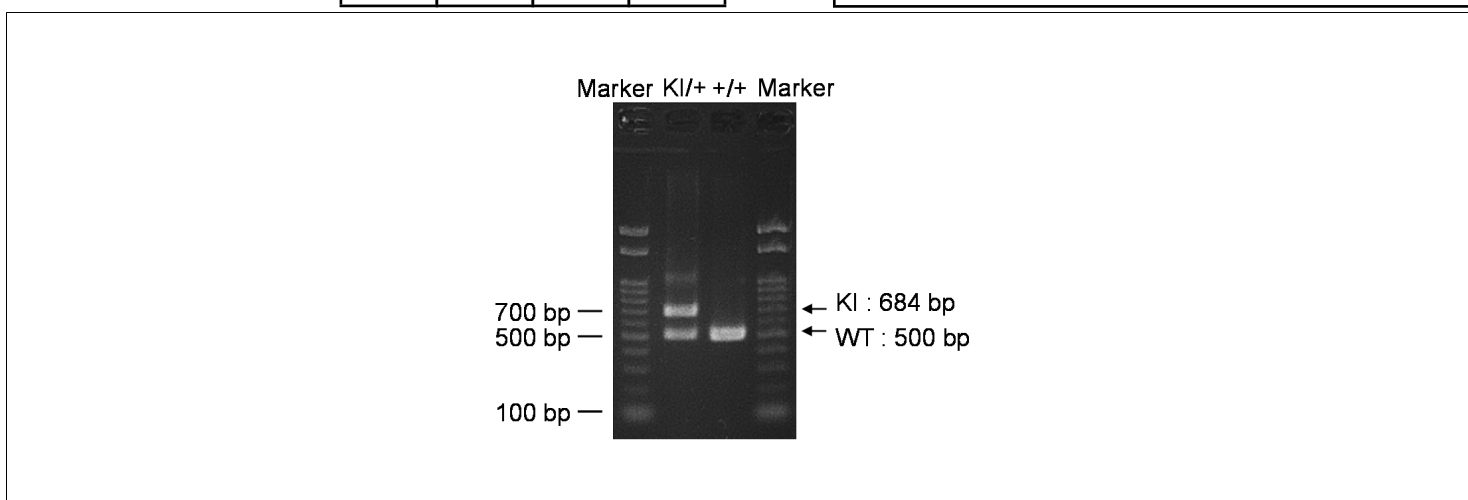
Reagent	Conc	Reaction 1	2	3	4	(μ L)
H2O		1.8				
PCR buffer	2 X	10.0				
dNTP	2.0 mM	4.0				
primer 1	10 pmol/ μ l	1.0				
primer 2	10 pmol/ μ l	1.0				
primer 3	10 pmol/ μ l	1.0				
DNA		1.0				
Taq	1 U/ μ l	0.2				
total		20				

Reaction Conditions

step	temp (°C)	time (sec)	note
1	94	120	
2	98	10*	
3	60	30*	
4	68	60*	*Repeat for 30 cycles

Marker Gene Ladder 100 (Wako, Cat. 316-06951)

Gel 2% agarose in 1 X TAE (100 V, 30 min)



primer_set	product_size	product (allele type)
primer 1	500 bp	WT
primer 1	684 bp	KI

Comment [Standard PCR](#)

Novagen KOD Xtreme™ Hot Start DNA Polymerase can be purchased from EMD.