

RBRC 11923

Strain name B6.129-I131<tm1(lacZ)Sabu>

Primer	primer_name	primer_seq	length	Reference
1	mIL31-346+	AAGCACTTTCCAAGAAAAGAGAGATGCTCA	30	Depositor's primer
2	mIL31+31-	TGGAGCCAGCGGTACCTGTGTGGAAGATCA	30	Depositor's primer
3	LacZ+169-	CAAAGCGCCATTCGCCATTCAGGCTGCGCA	30	Allergy Asthma Clin. Immunol., 13:23 (2017).

**Reaction Components**

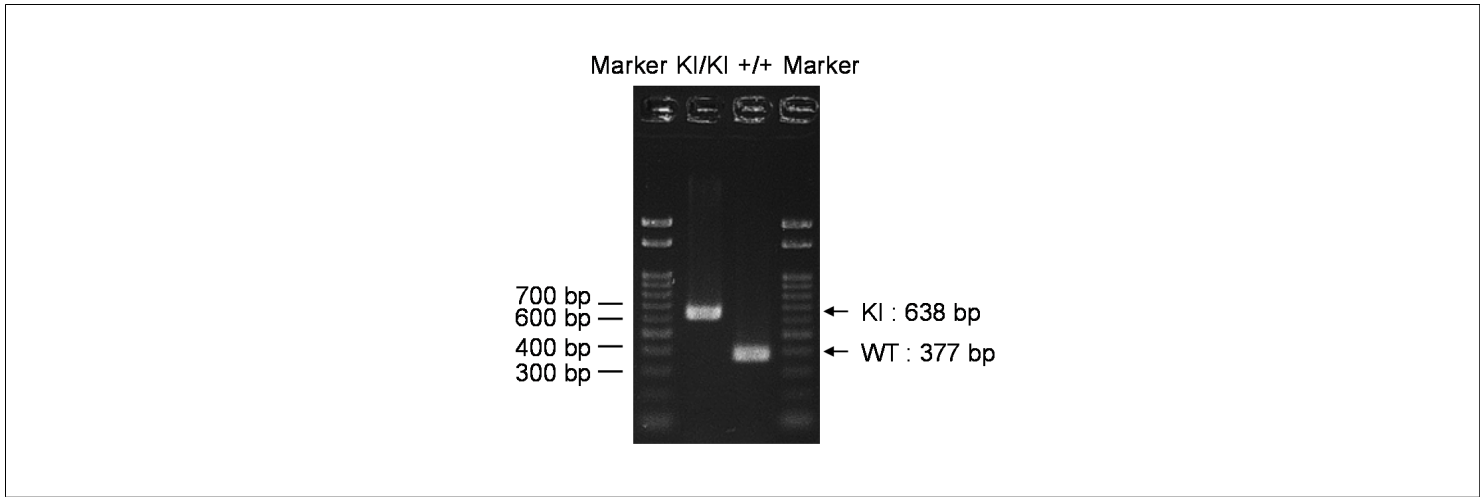
Enzyme

**Reaction Conditions**

step	temp (°C)	time (sec)	note
1	94	120	
2	98	10*	
3	60	30*	
4	68	60*	*Repeat for 30 cycles

Reagent	Conc	Reaction 1	2	3	4	(μL)
H2O		1.8				
PCR buffer	2 X	10.0				
dNTP	2.0 mM	4.0				
primer 1	10 pmol/μl	1.0				
primer 2	10 pmol/μl	1.0				
primer 3	10 pmol/μl	1.0				
DNA		1.0				
Taq	1 U/μl	0.2				
<b>total</b>		20				

**Marker** Gene Ladder 100 (Wako, Cat. 316-06951)  
**Gel** 2% agarose in 1 X TAE (100 V, 40 min)



primer_set	product_size	product (allele type)
primer 1 primer 2	377 bp	WT
primer 1 primer 3	638 bp	KI

**Comment** Standard PCR

Novagen KOD Xtreme™ Hot Start DNA Polymerase can be purchased from EMD.